

Ocoee CRA Target Areas Special Development Plan

Category: Best Practices

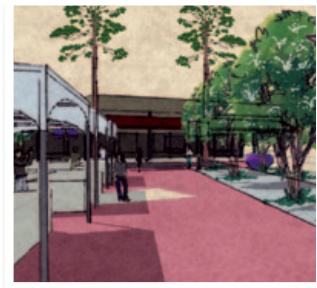
The AECOM project team was retained by the City of Ocoee to develop a CRA Special Development Plan that would transition the area into an urban place with a finer grained network of streets, enhanced open space, safer pedestrian environments, and mixed land uses while preserving the small-town character. The Plan consists of three components - CRA Framework Plan, Community Engagement Plan, and Regulating Plan - that work together to clearly articulate a CRA vision and planning principles as well as regulatory standards for each of three target areas.



Lakeland Lake Mirror Complex

Category: Great Places in Florida - Public Spaces

As Florida's most significant example of the City Beautiful movement architectural period, the Lake Mirror Park and Promenade forms one of the most prominent features of downtown Lakeland. Designed by New York landscape architect Charles Wellford Leavitt, the Promenade is a striking example of the Eclectic Classicism architectural design principles employed from 1890 to 1930. Owned and operated by the City of Lakeland, the Lake Mirror Complex has developed over 84 years into a collection of civic buildings, parks, an amphitheater and connected open space amenities that make it one of the City's primary public gathering, hosting thousands of visitors each year while providing opportunities for respite to local residents.



Tallahassee Midtown Placemaking Action Plan

Category: Grassroots Initiative

In coordination with the Knight Creative Communities Institute, the Florida A&M Landscape Architecture program and the Midtown Merchants Association developed design proposals to re-invent Midtown. To support these efforts, the City Commission identified Creating a Sense of Place, or Placemaking, as a top priority for several areas of the city, including Midtown. Building upon the creative student proposals, Planning Department staff worked with the local business community and residents of the surrounding neighborhoods. In March, the City Commission adopted the plan and allocated funds to ensure the vision comes to fruition.

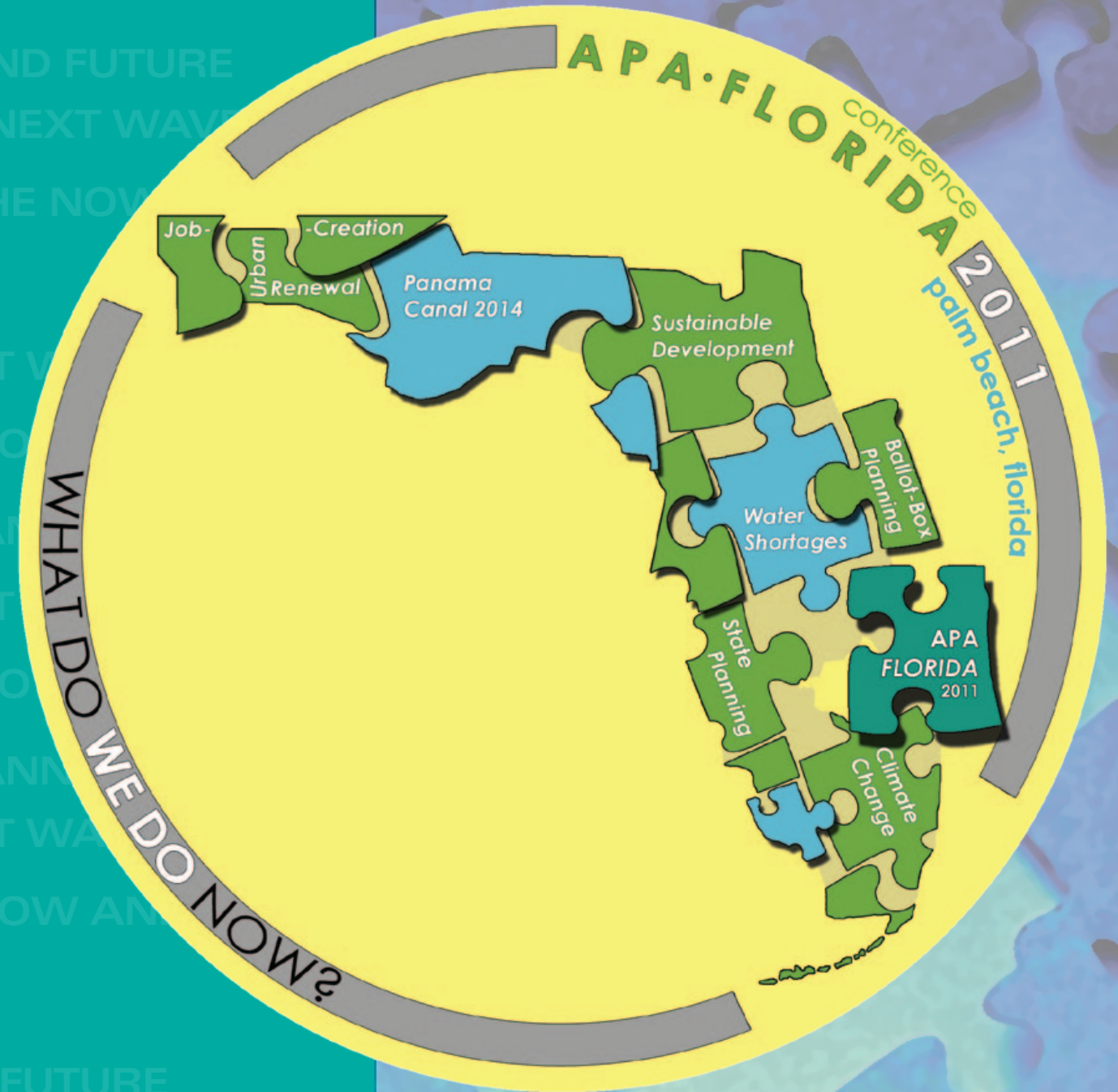


Post-Disaster Planning for Pinellas County

Category: Student Project Award

Working with Pinellas County planning staff, students enrolled in Land Use Law at the University of Florida crafted a series of evidence-based ordinances based on best practices to assist Pinellas County in an effort to prepare for following the occurrence of a natural disaster. Students pursuing their Master's degrees in Urban and Regional Planning and J.D. degree at the Levin College of Law drafted four model regulations to assist the County and the communities situated within it to facilitate rebuilding following such an event. These ordinances are innovative as they represent an interdisciplinary approach to planning post-disaster, as well as using disaster events as an opportunity to inspire conversations about planning for sea level rise. Based on planning and legal scholarship, as well as best practices, these ordinances are transferrable to communities in the State of Florida.

What Do We Do Now?



APA Florida 2011 Conference

PROJECT AWARDS

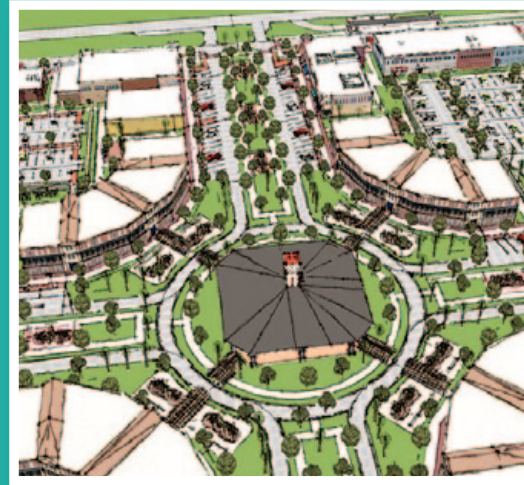
The Breakers, Palm Beach
September 8, 2011

Awards of Excellence

Alachua County Comprehensive Plan 2011-2030

Category: Comprehensive Plan (Large)

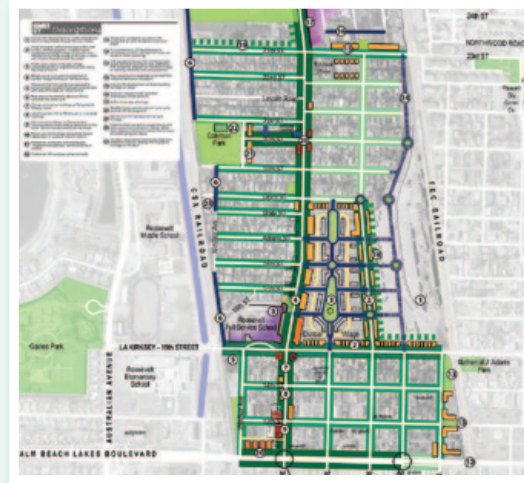
The Alachua County Comprehensive Plan represents the culmination of a three-year Plan update to address and link emerging long range community goals in the areas of transportation, land use, energy and health. Key principles are to provide a range of transportation, economic and housing opportunities to meet emerging 21st Century needs, focus compact mixed use development where infrastructure can be efficiently provided, conserve energy and reduce greenhouse gas emissions, foster a healthy community, promote local agriculture and protect natural resources.



West Palm Beach Coleman Park Neighborhood Improvements

Category: Neighborhood Planning

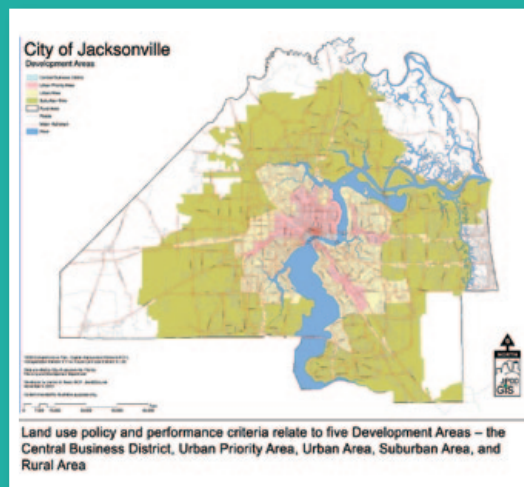
Imagine living in a neighborhood where over half of the residents have not completed high school, homes are run down, less than one-quarter of the dwelling units are owner-occupied, and the common denominator is poverty. The Coleman Park Neighborhood Improvements Plan was developed to kick off one of West Palm Beach's most ambitious revitalization efforts, providing a blueprint for Coleman Park and to outline the vision of the neighborhood's residents. Providing a holistic approach to revitalization, the Plan's objectives are an effort to restore the vibrancy of this historically-rich neighborhood.



Jacksonville 2030 Mobility Plan

Category: Best Practices

The City of Jacksonville 2030 Mobility Plan is an innovative response to the 2009 revisions to Florida's Growth Management laws as well as to the unintended consequences of transportation concurrency. The Mobility Plan links land use and transportation, establishing a tiered mobility fee system to replace the fair share program, and is a compilation of land use and transportation strategies, implemented through the City's Comprehensive Plan. The Plan establishes a city-wide multi-modal mobility score to measure mobility and establish acceptable levels of service for roadways, transit, bicycle, and pedestrian facilities using a Quality/Level of Service standard.



Awards of Merit



Palmetto Elementary Complex

Category: Planning Project

After almost a decade-long effort to replace the aging and outdated school, the new Palmetto Elementary opened January 4, 2011 as a result of a strong collaborative effort involving the School District, the City of Palmetto and Manatee County, the Boys and Girls Club, and the Just for Girls Club. The New Palmetto Elementary Complex project took an innovative approach to provide a new elementary school and Boys and Girls Club in a developed area of Palmetto. The strategy of enhancing opportunities within the City of Palmetto included an innovative approach to inter-governmental cooperation and public/private partnerships for successful implementation.



Special Area Plan for Tarpon Springs Sponge Docks and CRA

Category: Comprehensive Plan (Small)

In an effort to improve the quality of life for residents and visitors, the City of Tarpon Springs drafted a Special Area Plan to be the new adopted future land use for the Sponge Docks and Community Redevelopment Area. The plan organizes the area into ten character districts, each with its own set of permitted uses and development standards appropriate for the neighborhood. The Special Area Plan offers a fresh approach to comprehensive planning and development in the State of Florida by focusing on character first, instead of use, encouraging mixed-use development and establishing a residential density transfer program.



Orlando Downtown South Main Street Vision Plans

Category: Neighborhood Planning Category

Orlando's "Downtown South" Main Street program allows the City to implement recent vision plans created for the corridor and a proposed stop on the nearby SunRail station with the enthusiasm of neighborhood and business stakeholders. The result is a sustainable and predictable urban development plan that has resulted in more than \$100 million in property improvements since 2008. Utilizing the transect planning technique combined with infrastructure planning, the area is set to welcome transit oriented development as the area becomes a southern extension of Downtown Orlando in an area previously dominated by strip malls and heavy industrial uses.



Post-Disaster Redevelopment Planning: A Guide for Florida Communities

Category: Best Practices

"Post-Disaster Redevelopment Planning: A Guide for Florida Communities," is the latest guidebook in the Department of Community Affairs and Division of Emergency Management's Best Practice Series. It is also the culmination of the Statewide Post-Disaster Redevelopment Planning Initiative. This project, guided by a statewide group of experts on planning and long-term recovery, included researching lessons learned during previous disasters. This research was applied during the drafting of a planning process and tested through a series of pilot projects. The result is the first statewide effort of its kind to encourage pre-disaster planning for post-disaster redevelopment in the nation.